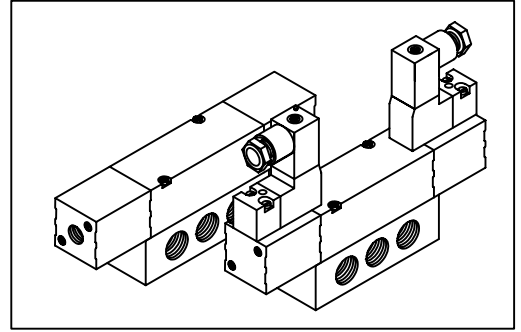


G 1/4 - 5/3 Sub base Solenoid & Pilot Operated High Flow Valve

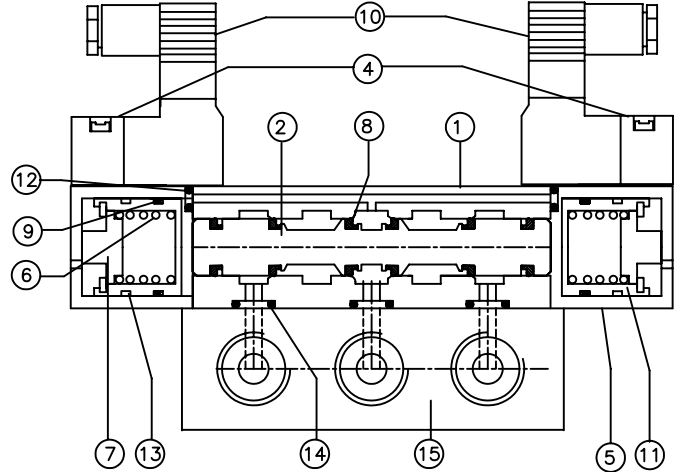
- Streamlined construction.
- Compact dynamic seal design results in higher flow passages.
- Available in sub-base design with base plate port sizes of G3/8,G1/2 & G15 coil
- Central position is provided with three options of Neutral, Positive & Negative to build appropriate logic circuit.
- Suitable for holding of double acting cylinder within its stroke range.



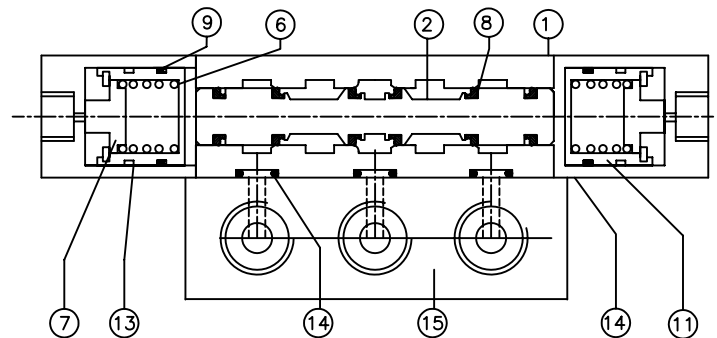
PART LIST

NO.	DESCRIPTION	QTY.	
		Solenoid	Pilot
1	Valve body	1	1
2	Spool	1	1
3	Pilot housing	-	2
4	Manual override pin	2	-
5	Intermediate housing	2	-
6	Spring	2	2
7	Spring Guide	2	2
8	Spool seal	6	6
9	Piston U cup	2	2
10	Coil with plug in connector	2	-
11	Piston	2	2
12	Solenoid hsg. O Ring	2	-
13	Piston wear ring	2	2
14	Sub-base O Ring	5	5
15	Base plate	1	1

Seal kit consists of items (2+ 8), 9,12 & 14



5/3 DOUBLE SOLENOID VALVE

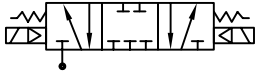


5/3 DOUBLE PILOT VALVE

COIL SPECIFICATION

TYPE	Valve with G15 coil
Tube Assy. Construction	3/2 NC Sub-base valve with coil assy. Orifice=1.1 mm, flow=24 l/min
Coil Voltages	AC: 24, 110, 230 V 50 Hz
	DC: 12,24 V
Voltage Range	± 10%
Power Consumption	AC: Pull:3 VA, DC: 2.5 WATT
Duty cycle	100%
Class of Insulation	F (Winding wire of class 'H' Insulation)
Degree of Protection	IP 65 – IS 2147
Cable Connector	DIN 43650 / PG 7

G 1/4 5/3 DOUBLE SOLENOID SUB-BASE VALVE



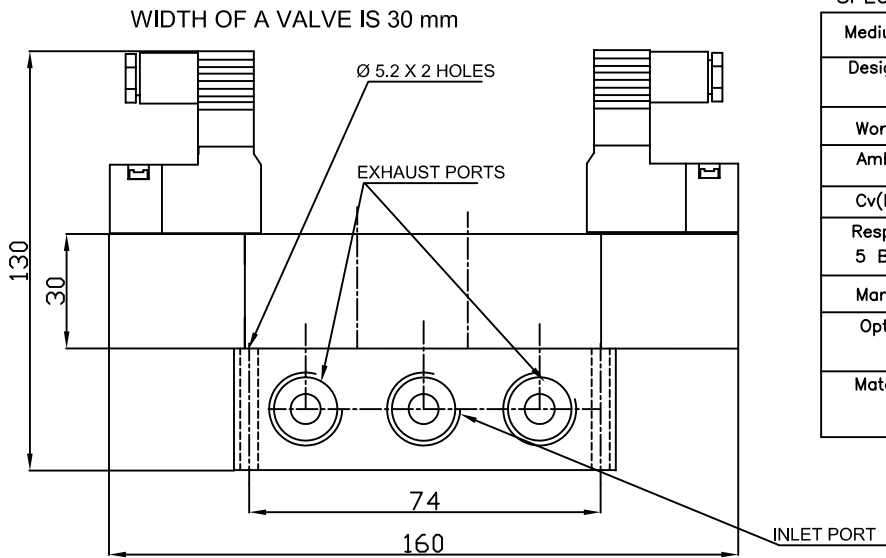
Neutral: All ports blocked in non- actuated position



Negative: Cylinder air exhausted in non-actuated position.



Positive: Inlet air connected to both cylinder ports in non-actuated position.



PART NOS.

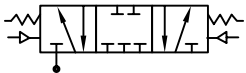
Type	Part No.
G 1/4 5/3 Double Solenoid Valve	D43224*
Seal Kit for 5/3 Double Solenoid Valve	SK43224*

* - Add appropriate suffix of X-Neutral, Y- Negative, Z- Positive

SPECIFICATION

Medium	Compressed Air, Filtered
Design	Spool Type With Air Spring return
Working Pressure	1.8 – 10 kg/sq.cm.
Ambient/Fluid Temp.	-10 °C to 55 °C
Cv(Nominal Flow)	1.3 (1300 lit/min.)
Response Time at 5 Bar	ON Time:-10 m.s. OFF Time:- 30 m.s.
Manual Override	Push type
Optional Features	PIC with Light Indicator External Pilot Actuation
Materials	Body,Spool :- Aluminium Seals:- NBR

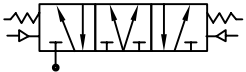
G 1/4 5/3 DOUBLE PILOT SUB-BASE VALVE



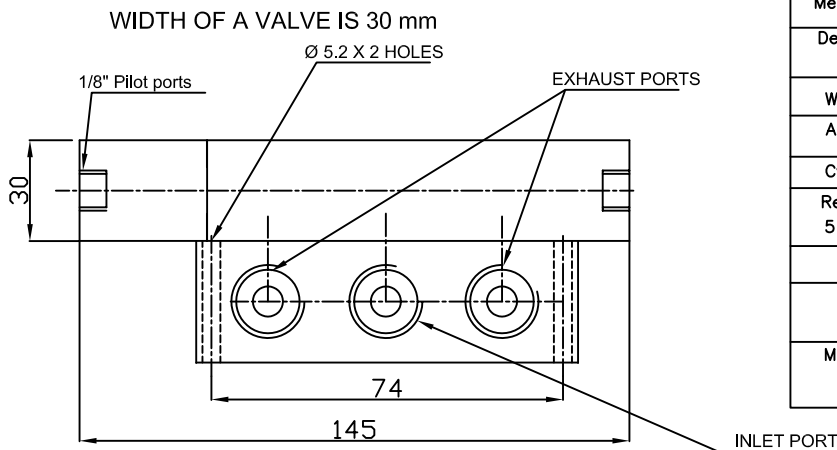
Neutral: All ports blocked in non- actuated position



Negative: Cylinder air exhausted in non-actuated position.



Positive: Inlet air connected to both cylinder ports in non-actuated position.



PART NOS.

Type	Part No.
G 1/4 5/3 Double Pilot Valve	43204PP*
Seal Kit for 5/3 Double Pilot Valve	SK43204PP*

* - Add appropriate suffix of X-Neutral, Y- Negative, Z- Positive

SPECIFICATION

Medium	Compressed Air, Filtered
Design	Spool Type With Air Spring return
Working Pressure	1.8 – 10 kg/sq.cm.
Ambient/Fluid Temp.	-10 °C to 55 °C
Cv(Nominal Flow)	1.3 1300 lit/min.)
Response Time at 5 Bar	ON Time:-10 m.s. OFF Time:- 30 m.s.
Materials	Body,Spool :- Aluminium Seals:- NBR