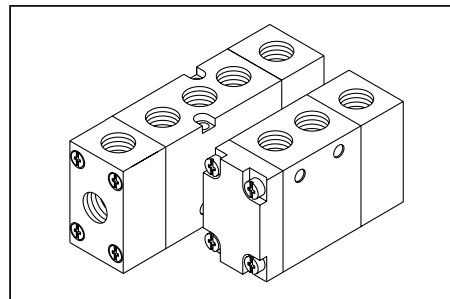


### G 1/4, G 1/8 Pilot Operated Exel Valves

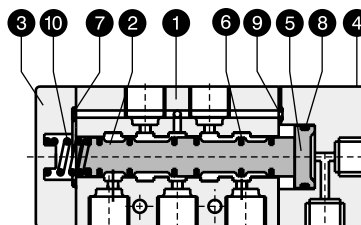
- Compact design.
- Low friction dynamic seals.
- 5/2 valves offered in 1/4" inlet and cylinder ports.  
( All 1/8" ports optional )
- 3/2 valves offered in all 1/8" ports.
- Facility of gang manifolding with 5/2 valves.



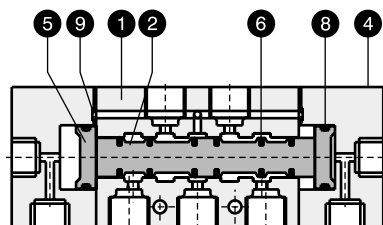
#### PART LIST - 5/2 WAY VALVES

NO.	DESCRIPTION	QTY.	
		Single Pilot	Double Pilot
1	Valve body	1	1
2	Spool	1	1
3	Air spring housing	1	-
4	Pilot housing	1	2
5	Piston	1	2
6	Spool seal	6	6
7	Gasket	1	-
8	Piston seal	1	2
9	'O' Ring ( Pilot hsg. )	1	2
10	Spring	1	-

Seal kit consists of items ( 2+6 ), 7, 8 & 9.



5/2 Single Pilot Exel Valve

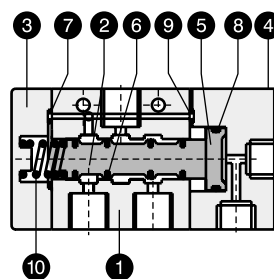


5/2 Double Pilot Exel Valve

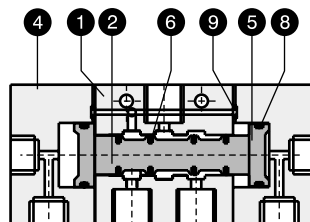
#### PART LIST - 3/2 WAY VALVES

NO.	DESCRIPTION	QTY.	
		Single Pilot	Double Pilot
1	Valve body	1	1
2	Spool	1	1
3	Air spring housing	1	-
4	Pilot housing	1	2
5	Piston	1	2
6	Spool seal	4	4
7	Gasket	1	-
8	Piston seal	1	2
9	'O' Ring ( Pilot hsg. )	1	2
10	Spring	1	-

Seal kit consists of items ( 2+6 ), 7, 8 & 9.

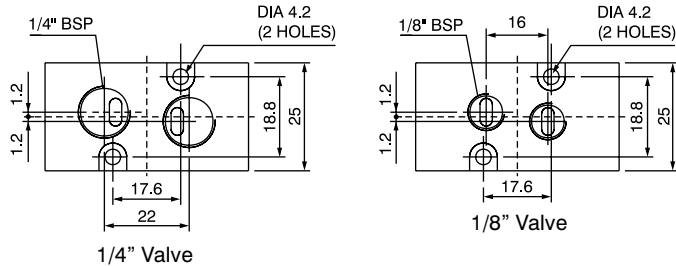


3/2 Single Pilot Exel Valve



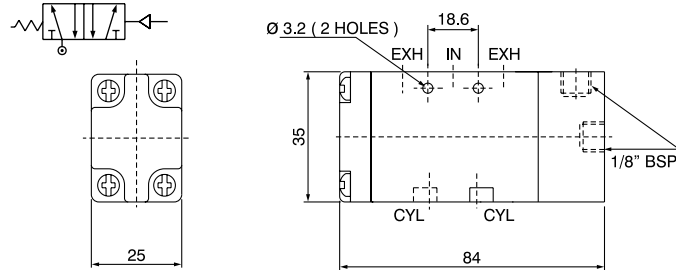
3/2 Double Pilot Exel Valve

**CYLINDER PORT CONFIGURATION ( 5/2 Valve )**

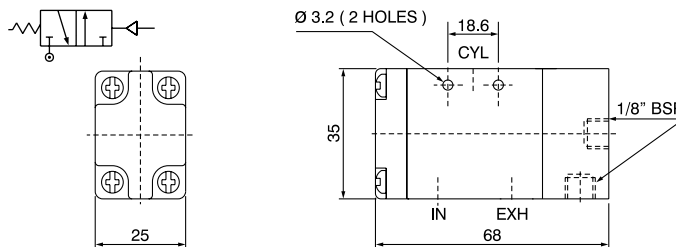


5/2 Exel Pilot valve is offered in two port configurations.  
 1) Inlet , cylinder ports of 1/4", exhaust ports of 1/8".  
 2) All ports of 1/8".

**SINGLE PILOT EXEL VALVE**



1/4", 1/8" - 5/2 Single Pilot Exel Valve



1/8" - 3/2 Single Pilot Exel Valve

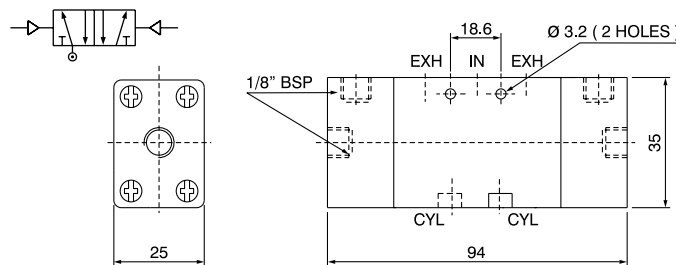
**PART NOS.**

Type	Single Pilot	Seal Kit
1/4" - 5/2 Exel valve	34004 PS	SK 33004 PS
1/8" - 5/2 Exel valve	33004 PS	
1/8" - 3/2 Exel Valve (NC)	33003 PS	SK 33003 PS

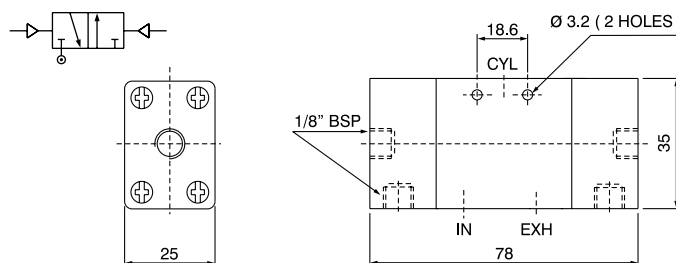
**SPECIFICATIONS**

Medium	Compressed air, Filtered
Design	Spool type with air spring and spring return
Working pressure	1.5 - 8 bar ( Inlet & pilot pressure should be same )
Ambient / fluid temp.	- 10 to 55° C
Cv ( Nominal flow )	0.7 ( 700 lit/min.)
Response time at 5 bar	ON Time : 10 m.s. OFF Time : 20 m.s.
Materials	Body & Spool : Aluminium Seals : NBR

**DOUBLE PILOT EXEL VALVE**



1/4", 1/8" - 5/2 Double Pilot Exel Valve



1/8" - 3/2 Double Pilot Exel Valve

**PART NOS.**

Type	Double Pilot	Seal Kit
1/4" - 5/2 Exel valve	34004 PP	SK 33004 PP
1/8" - 5/2 Exel valve	33004 PP	
1/8" - 3/2 Exel valve (NC)	33003 PP	SK 33003 PP

**SPECIFICATIONS**

Medium	Compressed air, Filtered
Design	Spool type
Working pressure	1.0 - 8 bar ( Inlet & pilot pressure should be same )
Ambient / fluid temp.	- 10 to 55° C
Cv ( Nominal flow )	0.7 ( 700lit/min.)
Response time at 5 bar	10 m.s.
Materials	Body & Spool : Aluminium Seals : NBR