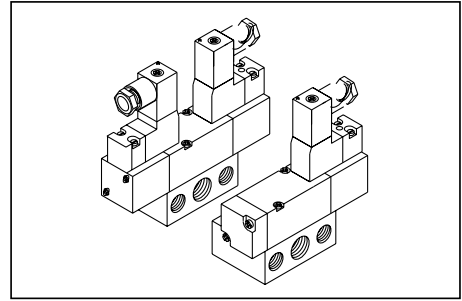


## G 1/8 - 3/2 Solenoid Operated Sub Base Exel Valves

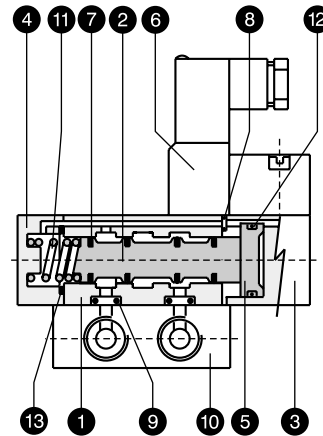
- Compact Design.
- Low friction dynamic seals for better performance.
- Available with 2.5 W coil.
- Facility of Gang manifolding.
- Manual override as a standard feature.



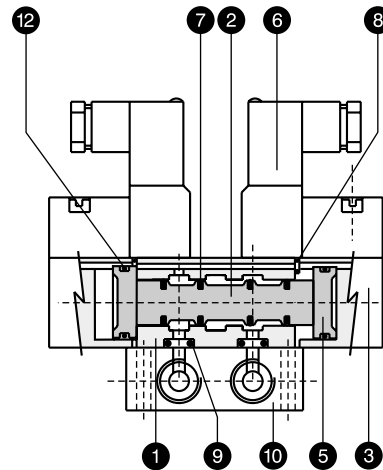
### PART LIST

NO.	DESCRIPTION	QTY.	
		Single Solenoid	Double Solenoid
1	Valve body	1	1
2	Spool	1	1
3	Solenoid Housing	1	2
4	Air Spring Housing	1	-
5	Piston	1	2
6	Coil with plug in connector	1	2
7	Spool Seal	4	4
8	Body 'O' ring	1	2
9	Sub base 'O' ring	5	5
10	Sub base plate	1	1
11	Spring	1	-
12	Piston 'O' ring	1	2
13	Gasket	1	-

Seal kit consists of items ( 2+7 ), 8, 9, 12 & 13



3/2 Single Solenoid Sub Base Exel Valve

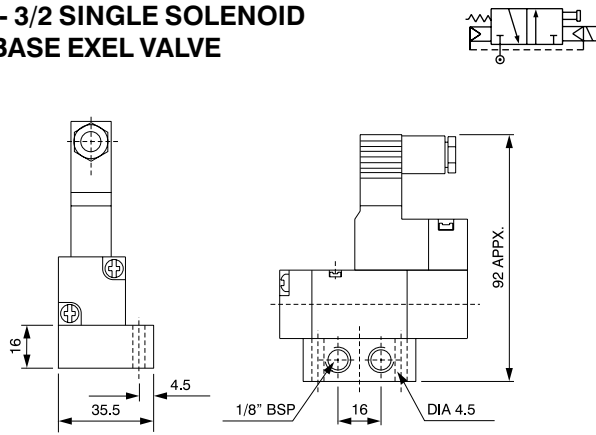


3/2 Double Solenoid Sub Base Exel Valve

### COIL SPECIFICATIONS

TYPE	Valve with 2.5 coil	
Construction	SS Plunger with NBR seals, SS magnet core assembled with brass adaptor Pilot valve is intergral with the coil	
Coil Voltages	AC : 24,110, 230 V 50 Hz	DC: 12, 24 V
Voltage Range	± 10%	
Power Consumption	AC : 3 VA	DC : 2.5 WATT
Duty cycle	100%	
Class of Insulation	F	
Degree of protection	IP 65 - IS 2147	
Cable connector	PG 7 - DIN 43650	

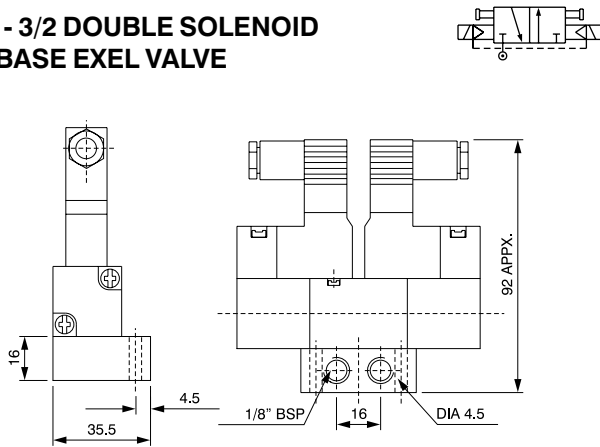
**G 1/8 - 3/2 SINGLE SOLENOID SUB BASE EXEL VALVE**



**PART NOS.**

Type	Valve	Seal Kit
3/2 Single Solenoid Exel Sub Base Valve with G 15 Coil	A 63013	SK 63013
3/2 Double Solenoid Exel Exel Sub Base Valve with G 15 Coil	A 63023	SK 63023

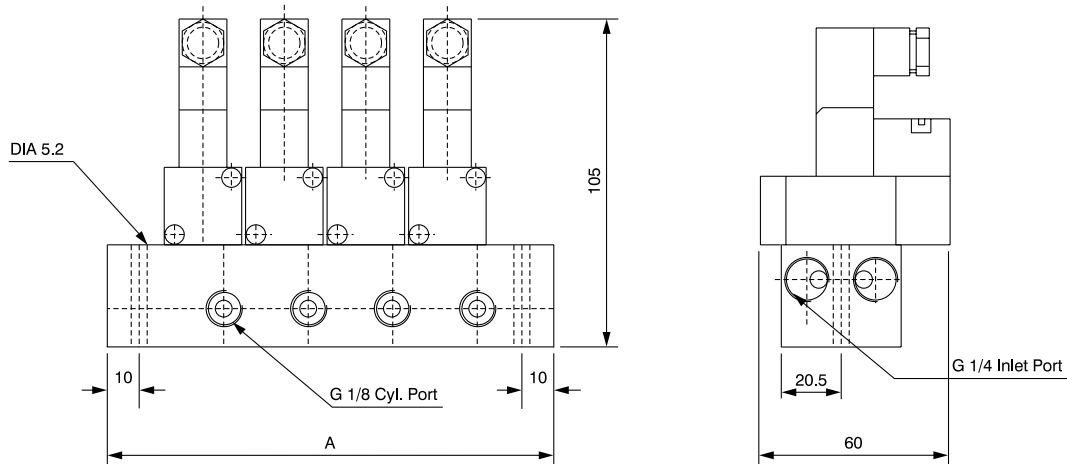
**G 1/8 - 3/2 DOUBLE SOLENOID SUB BASE EXEL VALVE**



**SPECIFICATIONS**

	Single Solenoid	Double Solenoid
Medium	Compressed Air, Filtered	
Design	Spool type with air spring return	Spool type
Working pressure	1.5 - 10 Kg/sq.cm	1.0 - 10 Kg/sq.cm
Ambient / fluid temp.	- 10° C to 55° C	
Cv ( Nominal flow)	0.5 ( 500 lit. / min )	
Response time at 5 bar	ON time - 10 m.s. OFF time - 20 m.s.	ON time - 10 m.s.
Manual Override	Push type	
Optional features	PIC with light indicator	
Materials	Body & Spool : Aluminium Seals :NBR	

**GANG MAINFOLD - 3/2 EXEL SUB BASE VALVE**



**Ordering Information**

For ordering gang manifold of 3 valves namely 2 nos. of Single Solenoid Exel Sub Base Valve and 1 no. of Double Solenoid Exel Sub Base Valve following is the ordering key.

Manifold : EMB 3-3 1 no.  
Valve : A 63013 2 nos.  
Valve : A 63023 1 no.

Number of Valves	2	3	4	5	6
Dimension 'A'	86.5	113	139.5	166	192.5
Manifold Part No.	EMB 3-2	EMB 3-3	EMB 3-4	EMB 3-5	EMB 3-6

- Note :
- 1) Max. no. of valves on a single manifold block is 6 nos.
  - 2) Valves beyond 6 nos. offered in combination of manifolds (consult Engg. Dept)
  - 3) Valves that can be mounted are -  
3/2 Single Solenoid Valve (A 63013)  
3/2 Double Solenoid Valve (A 63023)
  - 4) G 1/4 Cylinder port can also be given.