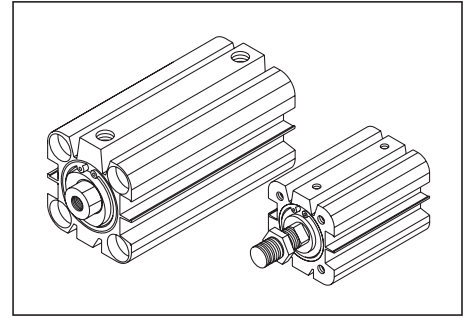


Compact Cylinders : Ø 25-100mm (Series CA & CB)

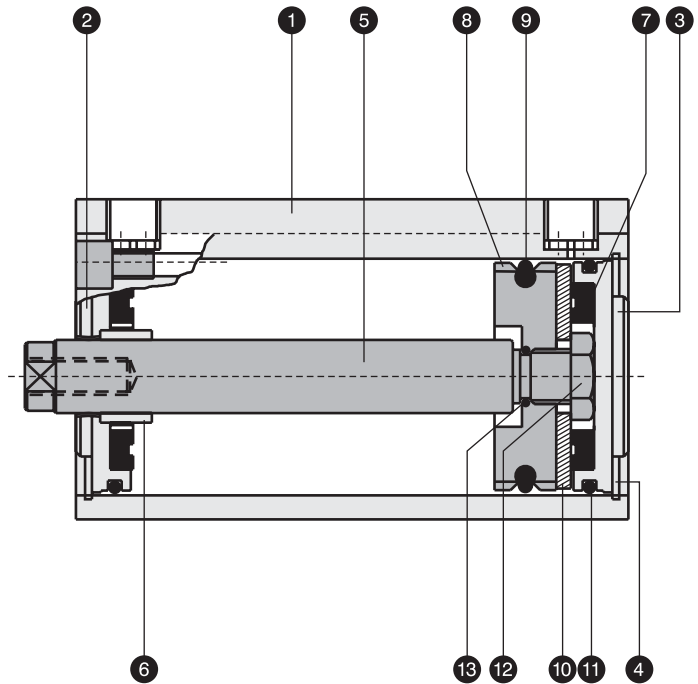
- Compact design of these cylinders is ideal for incorporation in clamping / holding devices.
- Incorporates superfinished aluminium cylinder barrel having 'T' slots on the sides for reed switch mounting.
- Damping pads at the end positions for cushioning effect.
- Self aligning low friction piston seals.
- For reed switch operation, magnet is provided as standard part.



PART LIST

NO.	DESCRIPTION	QTY.
1	Square tube	1
2	Front end cover	1
3	Rear end cover	1
4	Circlip	2
5	Piston rod	1
6	Piston rod guide bush	1
7	Cushioning damping pad	2
8	Wear ring	2
9	Piston seal	1
10	Magnet	1
11	'O' ring for end cover	2
12	Lock nut	1
13	'O' ring for piston assembly	1

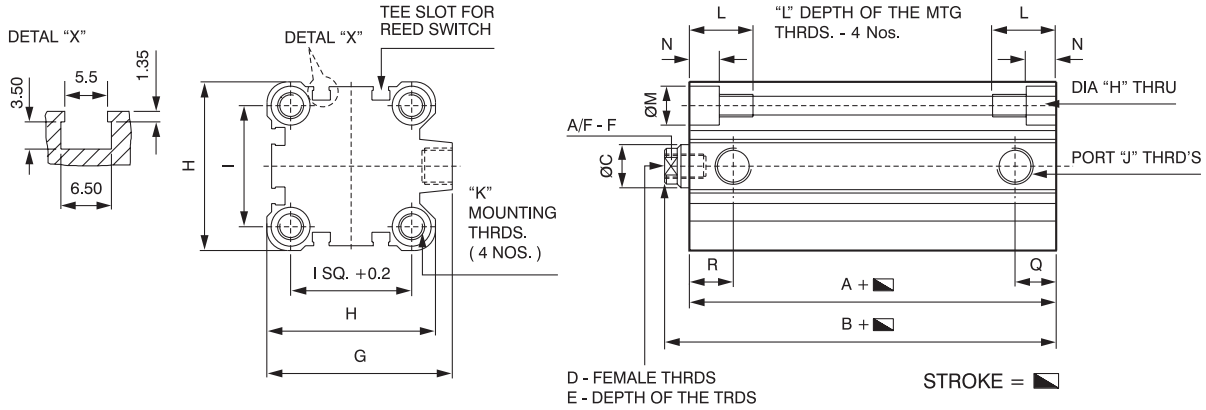
Seal kit consists of items 7, 8, 9, 11 & 13



SPECIFICATIONS

Medium	Filtered compressed air
Max. Opr. Pressure	10 bar
Temperature range	-10° C to 85° C (180° C for viton seals optional)
Std. Stroke length	Bore dia 25mm : 5 - 10 - 15 - 20 - 25 - 30 - 40 - 50mm Bore dia 32 & 40mm : 5 - 10 - 15 - 20 - 25 - 30 - 40 - 50 - 60 - 80mm Bore dia 50, 63, 80 & 100mm : 10 - 15 - 20 - 25 - 30 - 40 - 50 - 60 - 80 - 100mm
Material	Square tube : Aluminium super finish tube Piston : Aluminium Seals : NBR Piston rod : EN8 Hard chrome plated

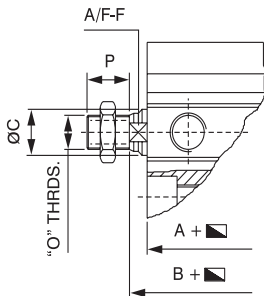
COMPACT CYLINDER CA & CB SERIES WITH FEMALE THRD'S



Bore Dia	Part No.	Series	A	B	C	D	E	F (A/F)	G	H	I	J	K	L	M	N	Q	R
25	CAF 25*	CA	32.5	37.5	10	M6	12	8	39	39	28	M5	M6	17	9	8	8	10
	CBF 25*	CB	32.5	37.5	10	M5	12	8	39	39	26	M5	M5	17	--	--	8	10
32	CAF 32*	CA	33	40	12	M8	13	9	49.5	45	34	G 1/8	M6	17	9	8	7.5	11
	CBF 32*	CB	33	40	12	M6	12	9	49.5	45	32	G 1/8	M6	17	--	--	7.5	11
40	CAF 40*	CA	39.5	46.5	16	M8	13	12	56	51	40	G1/8	M6	17	9	8	8	11
	CBF 40*	CB	39.5	46.5	16	M6	12	12	56	51	42	G 1/8	M6	17	--	--	8	11
50	CAF 50*	CA	40.5	48.5	16	M10	15	12	70	62	50	G 1/4	M8	20	10.5	10	11.5	12.5
	CBF 50*	CB	40.5	48.5	16	M8	13	12	70	62	50	G 1/4	M8	20	--	--	11.5	12.5
63	CAF 63*	CA	46	54	20	M10	15	14	83	75	60	G 1/4	M10	22	13.5	11	11.5	12.5
	CBF 63*	CB	46	54	20	M8	13	14	83	75	62	G 1/4	M10	22	--	--	11.5	12.5
80	CAF 80*	CA	53.5	63.5	25	M16	21	22	103	96	77	G 3/8	M12	25	16.5	14	11.5	16
	CBF 80*	CB	53.5	63.5	25	M10	15	22	103	96	82	G 3/8	M10	22	--	--	11.5	16
100	CAF A0*	CA	63	75	25	M16	21	22	122	113	94	G 3/8	M12	25	16.5	14	15	21
	CBF A0*	CB	63	75	25	M12	20	22	122	113	89	G 3/8	M10	22	--	--	15	21

* Stroke length

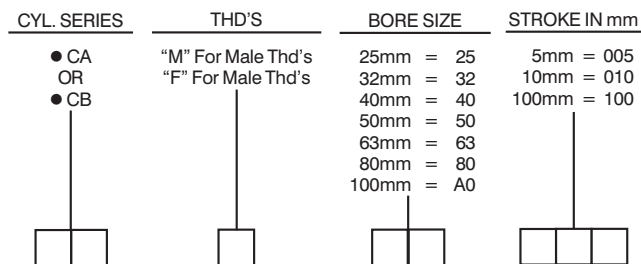
COMPACT CYLINDER CA & CB SERIES WITH MALE THRD'S



Bore dia	Part No.	Series	C	'O' Thds	P	F A/F
25	CAM 25*	CA	10	M 10 x 1.25	22	8
	CBM 25*	CB	10	M 10 X 1.25	22	8
32	CAM 32*	CA	12	M 10 X 1.25	22	9
	CBM 32*	CB	12	M 10 X 1.25	22	9
40	CAM 40*	CA	16	M 12 X 1.25	24	12
	CBM 40*	CB	16	M 10 X 1.25	22	12
50	CAM 50*	CA	16	M 16 X 1.5	32	12
	CBM 50*	CB	16	M 12 X 1.25	24	12
63	CAM 63*	CA	20	M 16 X 1.25	32	14
	CBM 63*	CB	20	M 12 X 1.25	24	14
80	CAM 80*	CA	25	M 20 X 1.5	40	22
	CBM 80*	CB	25	M 16 X 1.25	32	22
100	CAM A0*	CA	25	M 20 X 1.25	40	22
	CBM A0*	CB	25	M 20 X 1.25	40	22

* Stroke length

ORDERING INFORMATION



Typical Example :

- 40mm bore X 50mm stroke male thds.CA
Series Compact Cylinder - CAM40050
- 100mm bore X 100mm stroke femal thds. CB
Series Compact Cylinder - CBFA0100