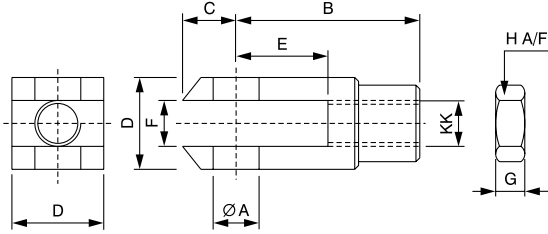


Accessories For Cylinders

- Accessories are optional elements which help in interlinking of cylinders with other linkages.
- Rod eye end, Universal coupler help in angular compensation.
- Piston rod clevis and Hinge mounting facilitate swivelling connection.

A) Piston Rod Clevis

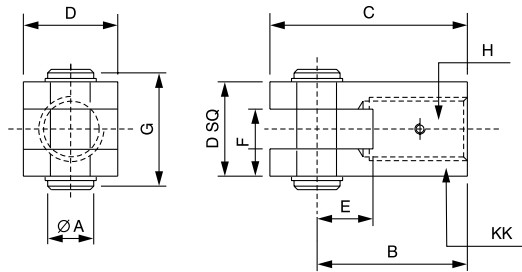
Piston Rod clevis facilitates the swivelling connection when attached to the piston rod front end. The rod clevis upto 4"/100 mm cylinder is provided with special clamp for easy assembly / dismantling.



For ϕ 1-1/2" to ϕ 6" and ϕ 32 to ϕ 100 mm Bore Cylinder

PART NO.	SUITABLE FOR CYLINDER	ϕ A H9	B	C	D	E	F	G	H	KK
Fork - 1	1"	5/16"	39	10	17	20	8	5	1/2"	5/16"-22 BSF
ISO-Fork - 32	32	10	40	12	20	20	10.2	5	17	M 10 x 1.25P
ISO-Fork - 40	40	12	48	14	24	24	12.2	7	19	M 12 x 1.25P
ISO-Fork - 50	50.63	16	64	16	30	32	16.2	8	24	M 16 x 1.25P
Fork - 2.5	1-1/2", 2-1/4" 2-1/2"	1/2"	64	16	30	32	16.2	7	3/4"	1/2"-16BSF
ISO-Fork - 80	80.100	20	80	19	38	40	20.2	9	30	M 20 x 1.25P
Fork - 4	3", 4"	3/4"	80	19	38	40	3/4"	12	1-3/16"	3/4"-12 BSF
Fork - 6	5", 6"	1"	89	25	51	51	1"	15	3/8"	1"-10 BSF

Material : Fork.Clip and Nut : Steel (White Zinc Passivation)



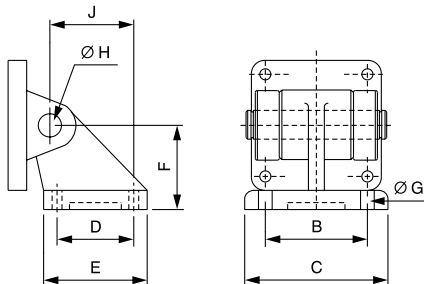
For ϕ 8" to ϕ 14" Bore Cylinder

PART NO.	SUITABLE FOR CYLINDER	ϕ A	B	C	D SQ.	E	F	G	H	KK
Fork - 8	8"	25.4	95.2	127	63.5	38.1	25.4	73.4	5/16"-22BSF Socket Set Screw	1-1/2" 8BSF
Fork - 12	10" 12" 14"	31.7	120.6	158.7	76.5	44.4	31.7	72.1	M 10 X 1.25P Socket Set Screw	2" 7BSF

Material : Fork.Clip and Nut : Steel (White Zinc Passivation)

B) Hinge Mounting

Hinge mounting is an accessory which dimensionally match with the corresponding trunnion mounting. Hinge mounting base can be fitted horizontally or vertically as required and offers angular movement to cylinders.



CYLINDER BORE	PART NO.	B	C	D	E	F	ϕ G	ϕ H	J
32	HNG - 32	38	51	18	31	32	6.6	10	21
40	HNG - 40	41	54	22	35	36	6.6	12	24
50	HNG - 50	50	65	30	45	45	9	12	33
63	HNG - 63	52	67	35	50	50	9	16	37
80	HNG - 80	66	86	40	60	63	11	16	47
100	HNG - 100	76	96	50	70	71	11	20	55
1 - 1/2" (38)	HNG - 1.5	41	54	22	35	36	6.6	12.7	24
2 - 1/4" (57)	HNG - 2.25	50	65	30	45	45	9	12.7	33
2 - 1/2" (63)	HNG - 2.5	52	67	35	50	50	9	12.7	37
3" (76)	HNG - 3	66	86	40	60	63	11	19	47
4" (102)	HNG - 4	76	96	50	70	71	11	19	55
5" (127)	HNG - 5	94	124	60	90	90	14	25.4	70
6" (152)	HNG - 6	118	148	88	118	115	16	25.4	97
8" (203)	HNG - 8	122	162	90	130	135	16	38.1	105
10" (254)	HNG - 10	150	200	110	160	165	22	38.1	128
12" (305)	HNG - 12	170	230	122	182	200	27	38.1	150
14" (356)	HNG - 14	200	260	150	210	225	27	57.2	175

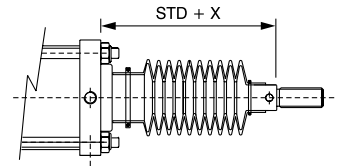
Material: Cast Iron Casting

C) Protective Leather Bellows

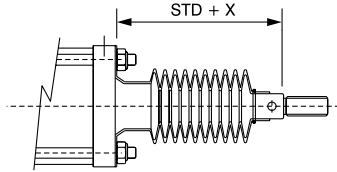
Leather bellows protect the piston rod and internal seals under dusty and arduous working conditions by covering it.

Note : Extra piston rod protection ('X').
 Upto 300 m.m. stroke - 25% of the actual stroke length.
 Beyond 300 m.m. stroke - 20% of the actual stroke length.
 The working of extra piston rod projection is valid for all sizes of bore.

Arrangement for
 ϕ 1-1/2" to ϕ 6"
 and ϕ 32 to ϕ 100
 mm Bore
 Cylinder

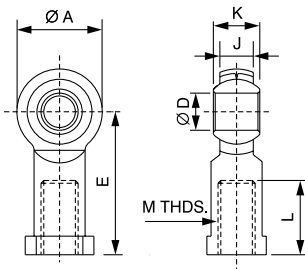


Arrangement for
 ϕ 8", ϕ 10", ϕ
 12", ϕ 14" Bore
 Cylinder



D) Rod Eye End

Rod eye end helps in angular compensation between the cylinder and mating part.

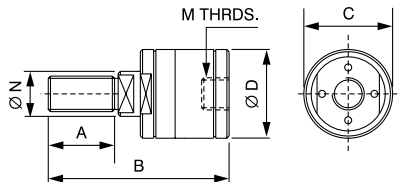


PART NO.	SUITABLE ON	M THDS.	Ø A	Ø D	E	K	J	L
SB 6	12 mm, 16 mm ISO	M 6 x 1	18	6	30	9	7	14
SB 8	20 mm ISO	M 8 x 1.25	22	8	36	12	9	17
SB 10	25 mm, 32 mm ISO	M 10 x 1.25	26	10	43	14	11	21
SB 12	40 mm ISO	M 12 x 1.25	30	12	50	16	12	24
SB 12 A	1-1/2", 2-1/4", 2-1/2" Medium Bore	M 12 x 1.5	30	12	50	16	12	24
SB 16	50 mm, 63 mm ISO	M 16 x 1.5 P	40	17	67	22	16	34
SB 20	80 mm, 100 mm ISO 3", 4" Medium Bore	M 20 x 1.5 P	46	20	77	25	18	40
SB 27	5", 6" Large Bore	M 27 x 2 P	62	28	103	35	25	53

Material : 1) Housing - Carbon Steel (Unichrome Plated)
 2) Ball - High Carbon Chromium Bearing Steel
 3) Insert - Copper Alloy

E) Universal Coupler

Universal coupler forms floating joint and thus helps in axial compensation.

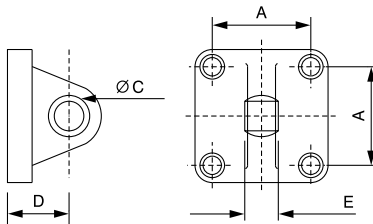


SUITABLE FOR CYLINDER	PART NO.	A	B	C	Ø D	E	M THDS.	Ø N
32 mm ISO	UC - 10	20	60	22	25	0.7	M 10 x 1.25 P	12
40 mm ISO 1-1/2", 2-1/4", 2-1/2" Standard Bore	UC - 12	24	68	29	32	0.7	M 12 x 1.25 P	15
50 mm ISO, 63 mm ISO	UC - 16	32	84	36	40	1.0	M 16 x 1.5 P	20
80 mm ISO, 100 mm ISO 3", 4" Standard Bore	UC - 20	40	103	46	50	1.2	M 20 x 1.5 P	25
8" Large Bore	UC - 36	72	190	85	93	2	M 36 x 2 P	45

E is axial float from centreline.

F) Single Rear Trunnion Mounting With Spherical Bearing

Rear trunnion mounting facilitates swivelling connection and angular compensation between cylinder and matching part.



PART NO.	SUITABLE FOR	A SQ.	Ø C H 7	D	E
SRT 40	40 mm ISO	38	12	25	16
SRT 50	50 mm ISO	46.5	16	27	21
SRT 63	63 mm ISO	56.5	16	32	21
SRT 80	80 mm ISO	72	20	36	25
SRT 100	100 mm ISO	89	20	41	25