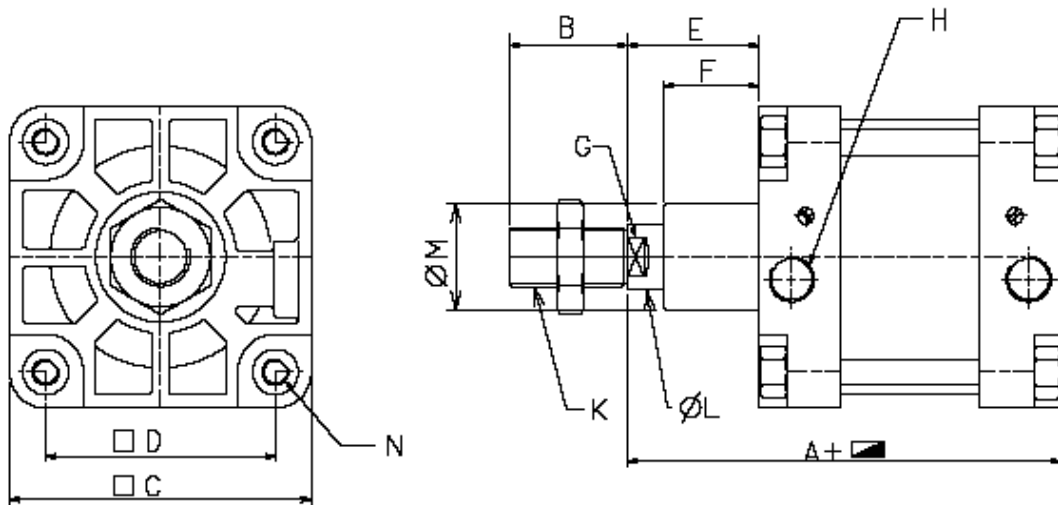
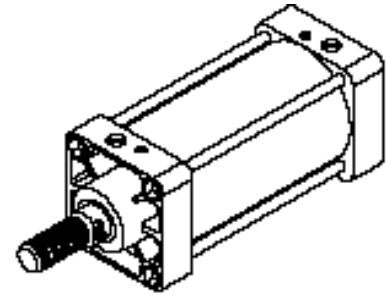


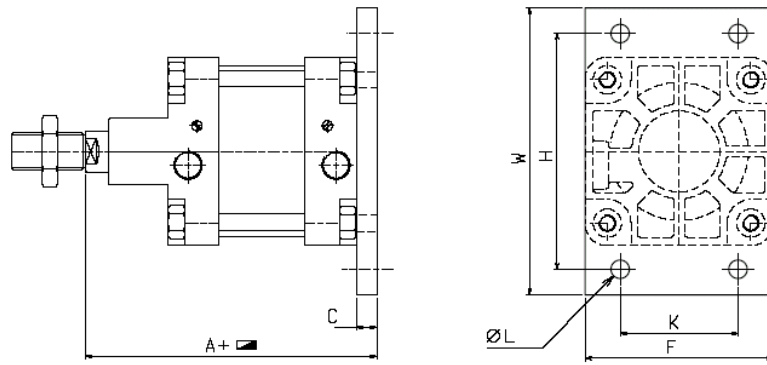
Ø 125,160 & 200 ISO/VDMA CYLINDERS

- Meets VDMA 24562 AND ISO 6431 standard Specifications.
- Built for heavy duty demanding applications with steel Tube and cast iron end cover Construction.
- Extensive choice of mountings and accessories.



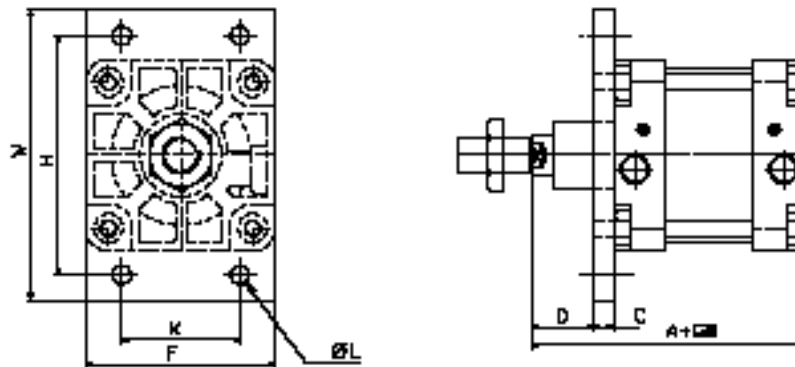
Basic Cylinder

Bore Size	A	B	C	D	E	F	G A/F	H BSP	K	ØL	ØM	N
Ø125	225	54	140	110	65	45	27	½" BSP	M27x2	32	60	M12
Ø160	260	72	183	140	80	58	36	¾" BSP	M36x2	40	65	M16
Ø200	275	72	240	175	95	67	36	¾" BSP	M36x2	40	75	M16



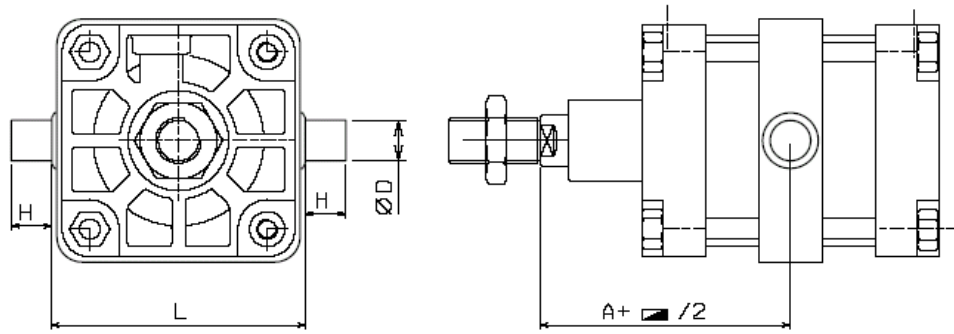
Rear Plate Mounting

Bore Size	A	C	W	F	H	K	L
Ø125	245	20	224	140	180	90	16
Ø160	280	20	280	180	230	115	18
Ø200	300	25	320	220	270	135	22



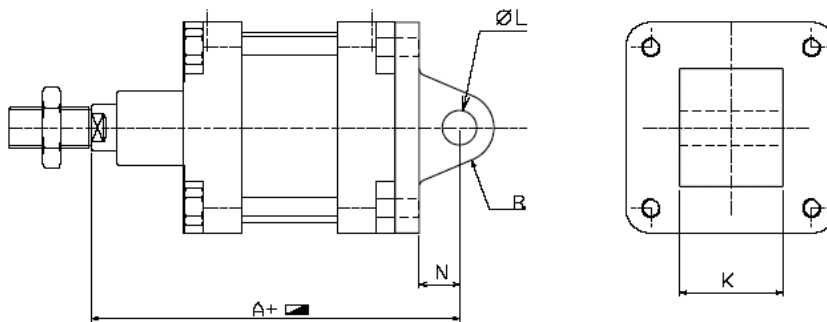
Front Plate Mounting

Bore Size	A	C	W	F	H	K	L
Ø125	225	20	224	140	180	90	16
Ø160	260	20	280	180	230	115	18
Ø200	275	25	320	220	270	135	22



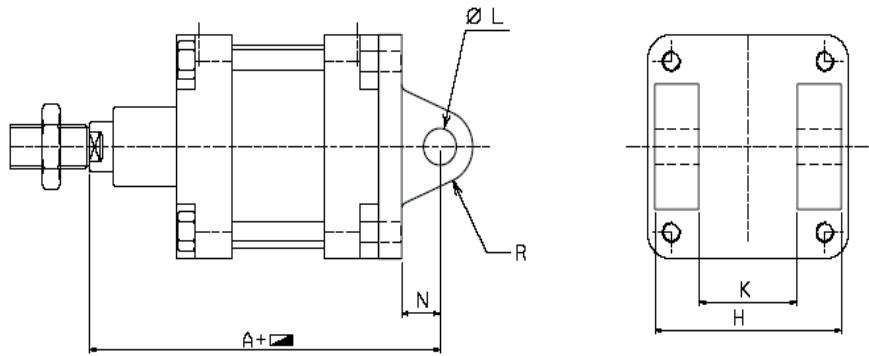
Center trunnion Mounting

Bore Size	A	D	H	L
Ø125	145	25	25	160
Ø160	170	32	32	200
Ø200	185	32	32	250



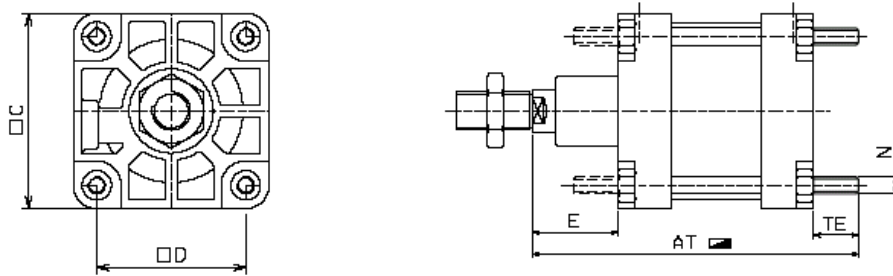
Single trunnion Mounting

Bore Size	A	N	L	R	K
Ø125	275	31	25	25	70
Ø160	315	35	30	30	90
Ø200	335	36	30	30	95



Double trunnion Mounting

Bore Size	A	N	L	R	K	H
Ø125	275	31	25	25	70	130
Ø160	315	35	30	30	90	170
Ø200	335	36	30	30	90	170



Tie rod Mounting

Bore Size	AT	C	D	TE	E	N
Ø125	259	140	110	34	65	M12
Ø160	302	183	140	42	80	M16
Ø200	317	240	175	42	95	M16