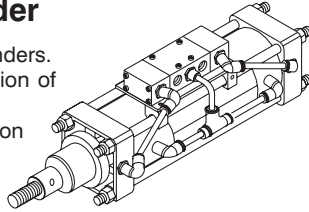


Speciality Products

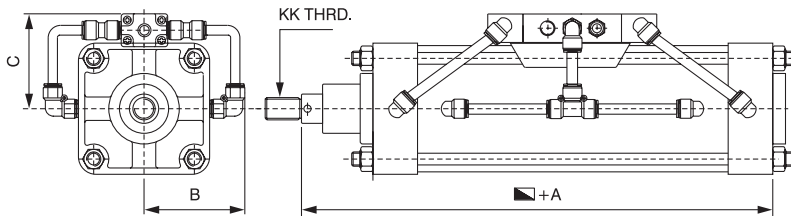
- Above products are developed for specific application like self reciprocation, 90 actuation, impact loading etc.
- Product to specific need can developed against requirements.

Self reciprocating Cylinder

- Offered with 2-1/4", 3" and 4" cylinders.
- Useful where continuous reciprocation of piston rod is required.
- Adjustment of frequency of operation possible with flow control valve.
- Being all pneumatic construction, this device is particularly useful where electrical installation has to be avoided.



CYL. DIA	STROKE + A	B	C	KK THRD.
57 (2-1/4")	202	54	57	1/2" - 16 BSF
76 (3")	228	64	65	3/4" - 12 BSF
101 (4")	228	75	83	3/4" - 12 BSF

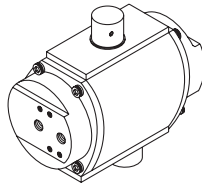


ORDERING INFORMATION

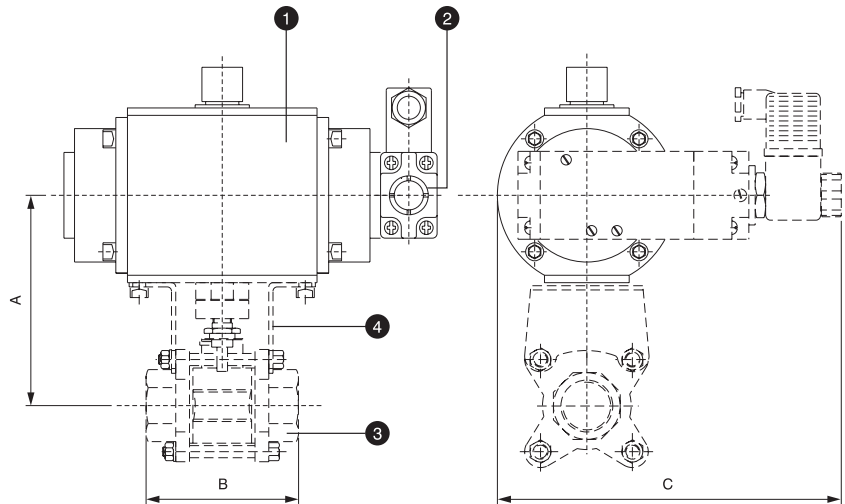
CYL. SERIES	BORE SIZE	STROKE IN mm
S S C	2 1/4" = 02	97mm = 097
	3" = 03	200mm = 200
	4" = 04	5 inch = 127

Rotary Actuator

- Suitable for 90 actuation with a torque of 4 Kgm.
- Besides other applications it is useful for on - off actuation of ball valve upto 1" size.
- Provision of mounting 3/2 or 5/2 Namur valve directly on the actuator.



BALL VALVE	A	B	C
1/2" Ball Valve	90	61.5	165 Approx.
3/4" Ball Valve	100	71	165 Approx.
1" Ball Valve	125	83.5	165 Approx.

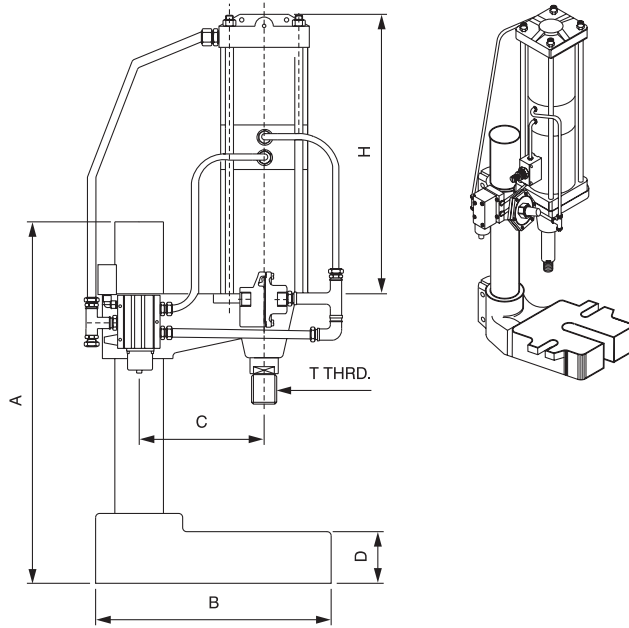


No.	Item	Part No.	Remark
1	Rotary Actuator	1011	
2	5/2 Namur Valve	-	Optional Item
3	Ball Valve	1/2", 3/4" Or 1"	

- Combination Part No.
For rotary actuator combination with namur valve and ball vall the part no. will be issued along with order acknowledgement.

3-1/2 Ton Impact Press

Generates impact of 3-1/2 tonne at inlet pressure of 5 bar.
 ● Suitable for marking, rivetting, punching, sizing etc. on metal surface. ● Actuation be manual, pilot operated or solenoid operated as required. ● Possible to get max. operational frequency of 45 cycles/min.



Standard Stroke Length = 3" (76 mm)

Part Nos. : a) 3-1/2 ton impact press with single pilot valve, 1/2" FRL with gauge, 1/8" - 3/2 push button valve with one meter tubing. Part No. 44000 CPU

b) 3-1/2 ton impact press with 3/8" single solenoid valve, 1/2" FRL with gauge. Part No. 44000 CU

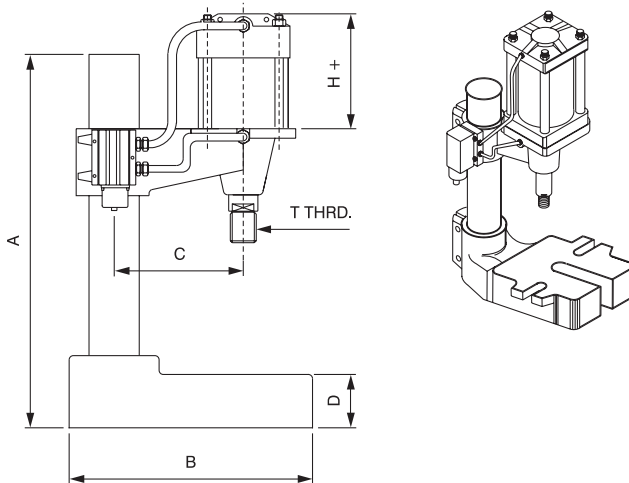
CYL. BORE	A	B	C	D	H	T THRD.
101 (4")	448	292	152	64	337	1" BSF

Note : 1) It is important that the impact takes place before stroke is complete.

2) Impact press should be used at maximum pressure of 5 bar. Air pressure beyond 5 bar may cause structural damage.

1/2 Ton Impact Press

Generates impact of 1/2 tonne at inlet pressure of 5 bar.
 ● Useful for assembly, marking etc. ● Provision of adjusting daylight by suitably positioning cylinder assembly on vertical pillar.



Standard Stroke Length = 2" (51 mm)

Standard kit : 1/2 ton press with 1/4 pilot operated poppet valve Part No. P3396BU

Max. stroke length : 12" (300 mm)

CYL. BORE	A	B	C	D	H	T THRD.
101 (4")	448	292	152	64	124	1" BSF