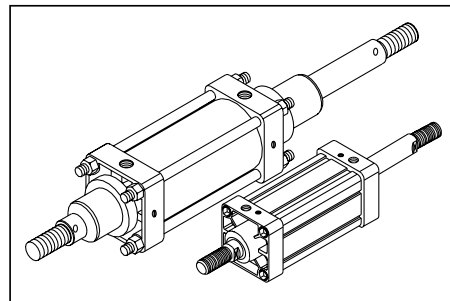
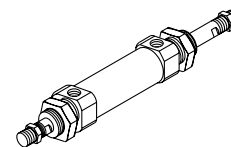
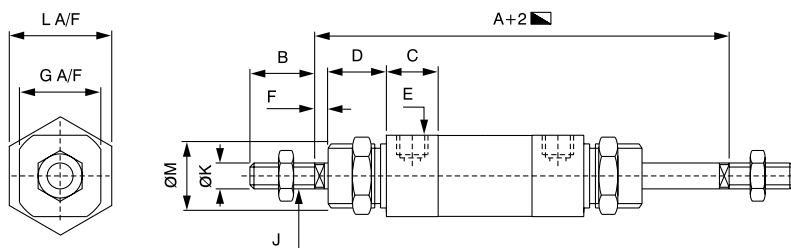


### Double Ended Cylinders

- Double ended cylinder has piston rod extending from both ends.
- Suitable for connecting piston rod movement to external linkages, actuators or limit switch etc.
- Using this concept, adjustable stroke cylinder or cylinder with manual override can be offered with necessary modifications.
- Mounting as offered with single ended version can also be offered.



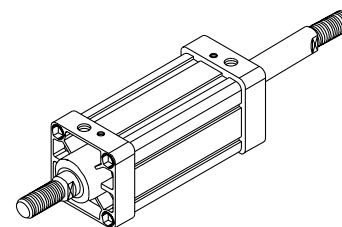
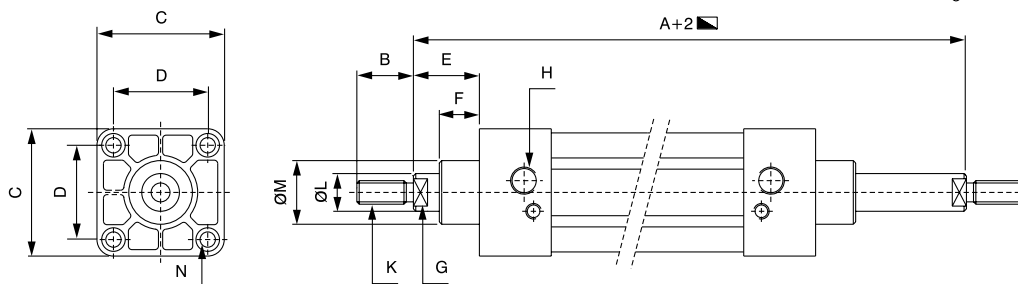
### Double Ended Miniature ISO Cylinders



BORE SIZE	A	B	C	D	E	F	G A/F	J (THD)	ØK	L A/F	M (THD)
Ø12	100	16	12	17	M5	5	20	M 6 X 1P	6	25	M 16 X 1.5 P
Ø16	107	16	12	17	M5	5	20	M 6 X 1P	6	25	M 16 X 1.5 P
Ø20	123	20	16	20	1/8" BSP	4	25	M 8 X 1.25 P	8	32	M 22 X 1.5 P
Ø25	136	22	16	21	1/8" BSP	7	32	M 10 X 1.25 P	10	32	M 22 X 1.5 P

Note : For internal details, refer data sheet PMC-01

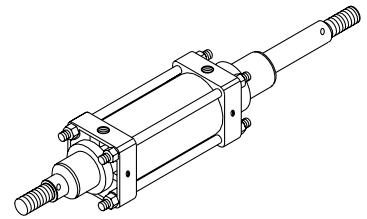
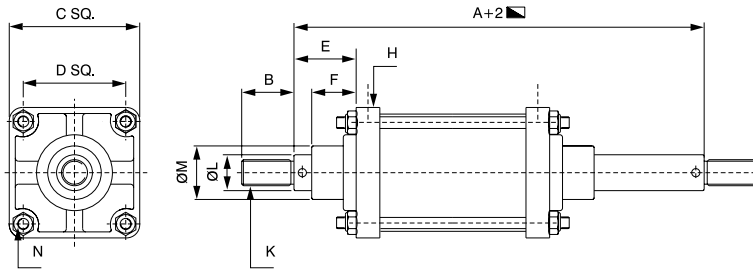
### Double Ended Ø32 - Ø100 VDMA / ISO Square Tube Cylinders Double Ended Ø32 - Ø100 VDMA / ISO Round Tube Cylinders



BORE SIZE	A	B	C	D	E	F	G A/F	H BSP	K	ØL	ØM	N
Ø32	146	22	46	32.5	26	16	10	G 1/8	M 10 x 1.25 P	12	30	M 6 x 1 P
Ø40	165	24	54	38	30	23.5	13	G 1/4	M 12 x 1.25 P	16	35	M 6 x 1 P
Ø50	180	32	64	46.5	37	29	17	G 1/4	M 16 x 1.5 P	20	40	M 8 x 1.25 P
Ø63	195	32	75	56.5	37	26	17	G 3/8	M 16 X 1.5 P	20	45	M 8 x 1.25 P
Ø80	220	40	85	72	46	30	21	G 3/8	M 20 x 1.5 P	25	45	M 10 x 1.5 P
Ø100	240	40	112	89	51	35	21	G 1/2	M 20 x 1.5 P	25	55	M 10 x 1.5 P

Note : For internal details, refer data sheet PMC-21 & 22

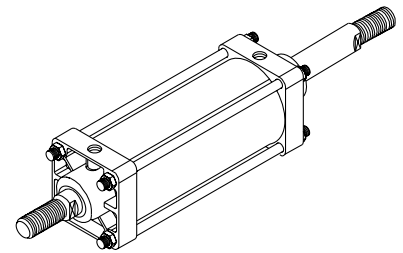
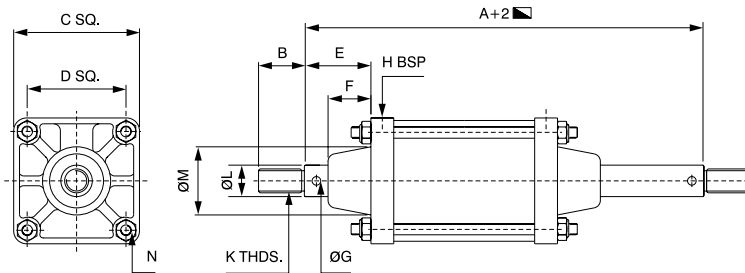
## Double Ended 1-1/2" - 4" Medium Bore Cylinders



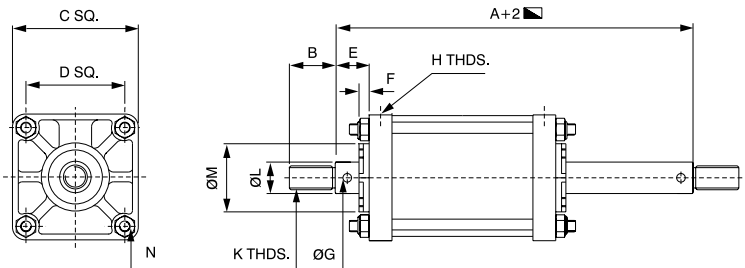
BORE SIZE	A mm	B mm	C SQ. mm	D SQ. mm	E mm	F mm	H BSP	K BSF	K Metric	ØL mm	ØM mm	N BSP
Ø38 (1-1/2")	173	21	51	37	48	35	G 1/4	1/2" - 16	M 12 x 1.5 P	16	30	1/4" - 26
Ø57 (2-1/4")	173	21	70	53	48	35	G 1/4	1/2" - 16	M 12 x 1.5 P	16	30	5/16" - 26
Ø63 (2-1/2")	173	21	76	57	48	35	G 1/4	1/2" - 16	M 12 x 1.5 P	16	30	5/16" - 26
Ø76 (3")	213	31	89	67	61	43	G 3/8	3/4" - 12	M 20 X 1.5 P	25	42	3/8" - 20
Ø102 (4")	215	31	112	86	61	43	G 3/8	3/4" - 12	M 20 x 1.5 P	25	42	3/8" 20

Note : For internal details, refer data sheet PMC-10

## Double Ended Ø5" & Ø6" Large Bore Cylinders



## Double Ended Ø8" - Ø14" Large Bore Cylinders



BORE SIZE	A mm	B mm	C	D	E	F	ØG	H BSP	K BSF	K - Metric Alternate	ØL mm	ØM mm	N BSP
Ø127 (5")	232	51	140	108	65	48	8	G 3/8	1" - 10	M 27 x 2 P	35	70	1/4" - 16
Ø152 (6")	247	51	165	130	63	46	8	G 3/4	1" - 10	M 12 x 2 P	35	80	5/8" - 14
Ø203 (8")	234	57	216	168	29	16	8	G 3/4	1-1/2" - 8	M 36 x 2 P	45	121	3/4" - 12
Ø254 (10")	283	76	267	210	43	17	9	G 3/4	2" - 7	M 48 X 2 P	57	150	1" - 10
Ø304 (12")	346	76	321	246	60	28	9	G 1	2" - 7	M 48 x 2 P	57	177	1" - 10
Ø355 (14")	346	76	375	292	60	28	9	G 1	2" - 7	M 48 x 2 P	57	177	1-1/4" - 9

Note : Cylinder is offered with BSF threading as standard. For metric threading of the piston rod please specify while ordering.

Note : For internal details, refer data sheet PMC-14.

For Double ended midget inch series cylinder refer data sheet PMC-04.

Above cylinders will have part no. related to respective drg. and will be issued along with order acknowledgement.