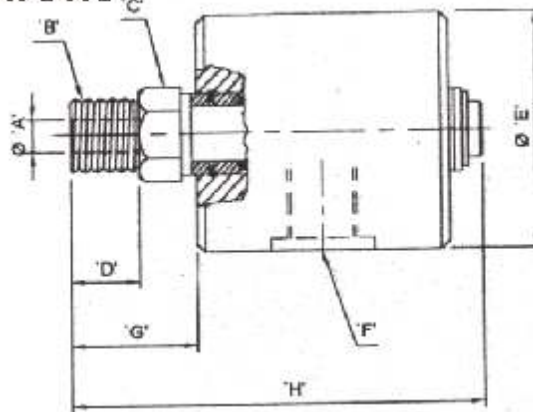




R-1300 ROTARY UNIONS



Slow speed SINGLE PHASE high pressure union. Rotor supported between oilite bearings, radial seals backed up by PTFE / leather washer.

OPERATING DATA:

Max Speed - 250 RPM

Max. Temperature - 120°C

Max Air Pressure - 10 kg./cm²

Max Hydraulic Pressure - 204 kg./cm²

Media - Air & Hydraulic Service

MODEL	'A'	'B' ROTOR THREAD BSP	'C' ACROSS FLAT	'D'	'E'	'F' BSPT	'G'	'H'
R 1300-002-001	6	1/4" RH	22	16	43	1/4"	30	85
R 1300-002-002	6	1/4" LH	22	16	43	1/4"	30	85
R 1300-003-003	7.5	3/8" RH	22	16	55	3/8"	30	85
R 1300-003-004	7.5	3/8" LH	22	16	55	3/8"	30	85
R 1300-004-005	14	1/2" RH	35	19	70	1/2"	43	118
R 1300-004-006	14	1/2" LH	35	19	70	1/2"	43	118
R 1300-005-007	15.8	3/4" RH	35	19	70	1/2"	43	118
R 1300-005-008	15.8	3/4" LH	35	19	70	1/2"	43	118
R 1300-006-009	22	1" RH	55	27	88	1"	59	175
R 1300-006-010	22	1" LH	55	27	88	1"	59	175
R 1300-007-011	32	1.1/4" RH	50	27	100	1.1/4"	47	128
R 1300-007-012	32	1.1/4" LH	50	27	100	1.1/4"	47	128
R 1300-008-013	38.1	1.1/2" RH	54	31	83	1.1/2"	67	166
R 1300-008-014	38.1	1.1/2" LH	54	31	83	1.1/2"	67	166
R 1300-009-015	50	2" RH	65	29	88	2"	68	202
R 1300-009-016	50	2" LH	65	29	88	2"	68	202
R 1300-010-017	63.5	2.1/2" RH	80	40	120	2.1/2"	91	258
R 1300-010-018	63.5	2.1/2" LH	80	40	120	2.1/2"	91	258
R 1300-011-019	76.2	3" RH	95	50	145	3"	111	301
R 1300-011-020	76.2	3" LH	95	50	145	3"	111	301