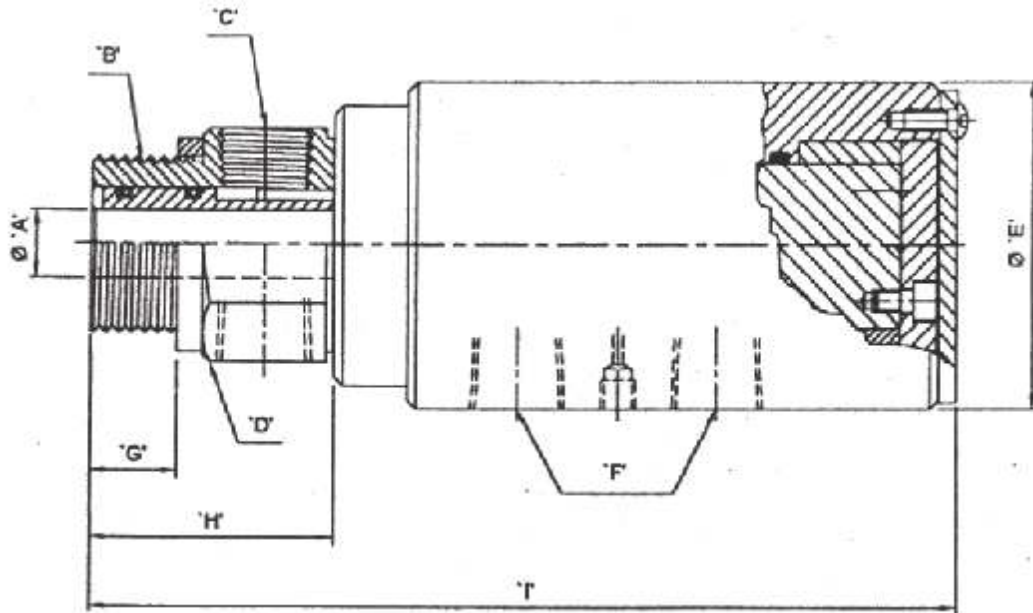




R-1600 ROTARY UNIONS



Dual passage, slow speed, radial seals, rotor supported between oilite bearings, also suitable for triple passage service with tandem arrangement.

OPERATING DATA:

Max Speed - 250 RPM

Max. Temperature - 120°C

Max Air Pressure - 10 kg./cm²

Max Hydraulic Pressure - 204 kg./cm²

Media - Air & Hydraulic Service

MODEL	'A' HOLE	'B' ROTOR THREAD BSP	'C' OUTLET THREAD BSPT	'D' ACROSS FLAT	'E'	'F' INLET THREAD BSPT	'G'	'H'	'I'
R 1600-001-005	3.1	1/2" RH	1/8"	32	47	1/8"	14	39	122
R 1600-001-006	3.1	1/2" LH	1/8"	32	47	1/8"	14	39	122
R 1600-002-007	6	3/4" RH	1/4"	32	55	1/4"	15	47	147
R 1600-002-008	6	3/4" LH	1/4"	32	55	1/4"	15	47	147
R 1600-003-009	9.5	1" RH	3/8"	44.5	55	1/4"	23	56	155
R 1600-003-010	9.5	1" LH	3/8"	44.5	55	1/4"	23	56	155
R 1600-004-011	12	1.1/4" RH	1/2"	55	70	1/2"	20	59	169
R 1600-004-012	12	1.1/4" LH	1/2"	55	70	1/2"	20	59	169
R 1600-005-013	18.5	1.1/2" RH	3/4"	63.5	88	3/4"	24	67	242
R 1600-005-014	18.5	1.1/2" LH	3/4"	63.5	88	3/4"	24	67	242