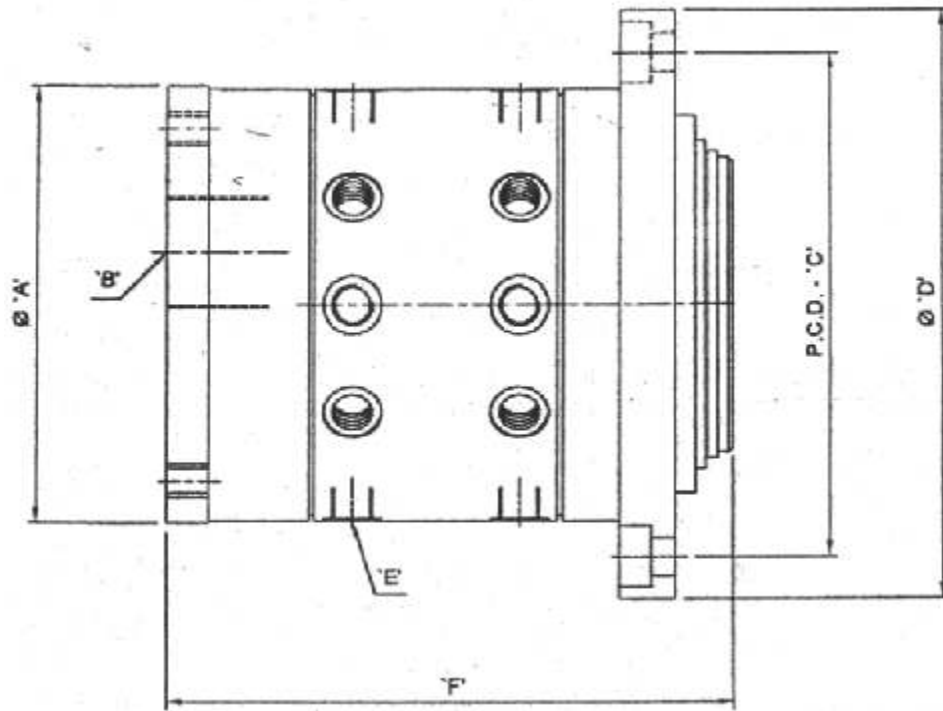




R-1700 ROTARY UNIONS



Multi passage union more than three passages are provided radially sealed, rotor supported between oilite bearings.

OPERATING DATA:
 Max Speed - 100 RPM
 Max. Temperature - 120°C
 Max Air Pressure - 10 kg./cm²
 Max Hydraulic Pressure - 204 kg./cm²
 Media - Air & Hydraulic Service

MODEL	'A'	'B' BSP	'C' P.C.D.	'D'	'E' BSP	'F'
R 1700-00-000	103	3/4"	120	140	1/8"	115