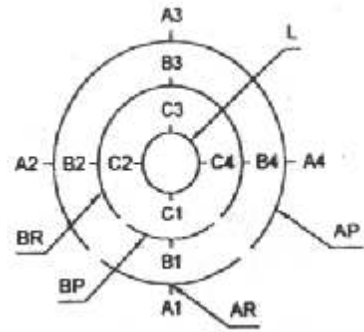
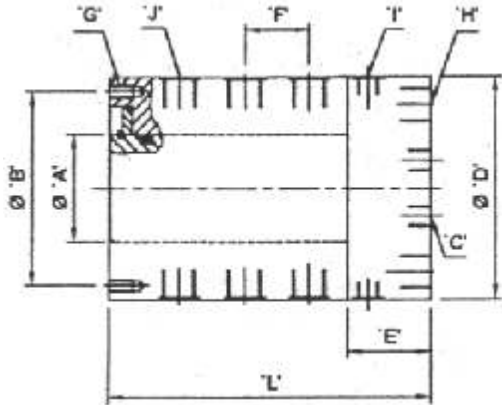




# ROTARY DISTRIBUTION VALVES



- L - Uncontrolled Lubrication
- BR - Return Line for Cylinders In Clamped Position
- AP - Pressure Line for Cylinders In Clamped Position
- BP - Pressure Line for Cylinders In Loading / Unloading Station
- AR - Return Line for Cylinders In Loading / Unloading Station

Rotary Distribution Valves are available in various configuration. Multistation operations with various combinations / option for clamping / unclamping, uncontrolled lubrication etc.

### OPERATING DATA:-

Max. Speed - ...RPM  
 Custom Built

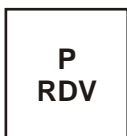
MODEL	'A'	'B'	'C'	'D'	'E'	'F'	'G'	'H' PORT	'I'	'J' PORT	'L'
RDV-*-02-00-G1/4"	40.91	70	M6	85	40	35	M8	1/4"	M6	1/4"	139.3
RDV-*-02-00-G1/4"	40.91	70	M6	85	40	35	M8	1/4"	M6	1/4"	174.3
RDV-*-02-00-G3/8"	58	100	1/8"	115	40	35	M8	3/8"	1/8"	3/8"	139.3
RDV-*-02-00-G3/8"	58	100	1/8"	115	40	35	M8	3/8"	1/8"	3/8"	174.3
RDV-*-02-00-G1/2"	67.52	122	1/4"	140	53	42	M8	1/2"	1/4"	1/2"	164.8
RDV-*-02-00-G1/2"	67.52	122	1/4"	140	53	42	M8	1/2"	1/4"	1/2"	206.8

\* This area denotes No. of Working Station.  
 Please Specify in your order No. of Station Required.

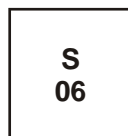
### HOW TO ORDER

'FLUCONN' Product Code consists six sets of number.  
 Each set of number specify the feature, for Example a Rotary Distribution Valve ordering code RDV-06-02-01-01-G 1/4" Would Mean

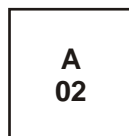
- P - Product - Rotary Distribution Valve
- S - No. of Stations
- A - Single / Double acting
- N - Loading / Checking Station
- C - No. of Uncontrolled Channels for Air / Lubrication
- T - Threads in Ports



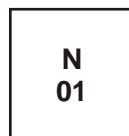
Product Code



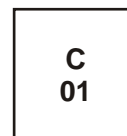
No. of Stations (2-16)



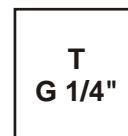
Cyl. Type 1- Single 2-Double



Loading Stations (1-3)



Uncontrolled Lubrication Stations (0-2)



Port Threads (G 1/4", G 3/8", G 1/2")